

# Explosion Vent Stocking Program

Oseco's explosion vent stocking program is designed with the most common explosion venting applications in mind. The program includes the MV/MV-S\*, CRVC, and the RNDCC explosion vents, all of which include black neoprene gaskets on the inlet side. All explosion vents included in this program meet the requirements of the OSHA Combustible Dust National Emphasis Program and NFPA 68.

The Explosion Vent Stocking Program allows for a significant cost and time savings when you need explosion vents in a hurry. Offering one of the industry's best lead times of three days, makes Oseco the clear choice for your explosion vent needs.

## MV Metal Vent

Oseco's MV explosion vent is an all metal design (no fluoropolymer) using a stainless steel controlling membrane. No holes or slits are visible, which makes the MV vent excellent for applications where product buildup may be a concern. The MV may be used in applications where the positive pressure does not exceed 60% of the minimum tolerance. The MV is also available with FDA-approved gaskets for use in sanitary sevice applications (MV-S).



Temperature Range (F°)	Operating Ratio	Non-Fragmenting	Design
-20° to 450°	60%	Yes	Single Element

## CRVC Composite Vent



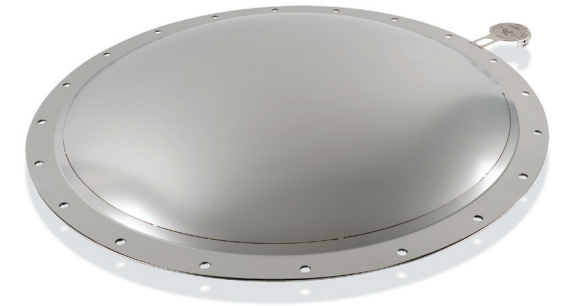
The CRVC is a domed vent which can be used in applications where the positive pressure does not exceed 70% of the minimum tolerance. The CRVC can withstand much higher vacuums than flat vents without vacuum support bars on the frame. The CRVC is excellent for use in high cycling applications.

Temperature Range (F°)	Operating Ratio	Non-Fragmenting	Design
-20° to 450°	70%	Yes	Composite

## RNDCC Round Crowned Vent

The RNDCC is a crowned, round explosion vent designed for use with round ductwork. It may be exposed to system pressures up to 70% of minimum tolerance with good service life.

The perimeter stitching of the top section allows utilization of much thicker materials than previous domed designs, which results in a much more damage resistant vent panel. The RNDCC can withstand full vacuum without the need for vacuum support bars on the frame.



Temperature Range (F°)	Operating Ratio	Non-Fragmenting	Design
-20° to 450°	70%	Yes	Composite

### 3-Day Lead Time Standard on all included vents

Size (in)	Burst Pressure	Vacuum Rating	Relief Area (ft <sup>2</sup> )
<b>MV/MV-S*</b>			
12 x 24	1.5 psig	1 psig	1.83
18 x 35	1.5 psig	1 psig	4.13
24 x 36	1.5 psig	1 psig	5.73
36 x 44	1.5 psig	1 psig	10.65
<b>CRVC</b>			
18 x 35	1.5 psig	4 psig	3.83
24 x 24	1.5 psig	3.75 psig	3.51
24 x 36	1.5 psig	3.5 psig	5.39
36 x 36	1.5 psig	3 psig	8.26
36 x 44	1.5 psig	3 psig	10.18
<b>RNDCC</b>			
24 Round	1.5 psig	Contact Factory	2.88
30 Round	1.5 psig	Contact Factory	4.51
36 Round	1.5 psig	Contact Factory	6.63

- Inlet gasket included
- Optional burst detection available
- Optional outlet frames and gaskets available
- \*MV-S includes FDA approved gaskets for use in sanitary applications
- Frame drawings available at [www.oseco.com](http://www.oseco.com)

All vents include black neoprene gasket on inlet side. (Max temp. 200°F)  
 \*MV-S includes FDA approved white silicone gasket on inlet side. (Max temp. 450°F)  
 All burst pressures and vacuum ratings rated at 72°F.  
 Burst tolerance=±0.25 psig.



# Explosion Vent Stocking Program

Let Oseco help your company become OSHA/NFPA 68 compliant.

Oseco's explosion vents are OSHA and NFPA approved methods of deflagration and explosion venting. Our experienced sales team can provide a solution to get your company up to code. Visit us at [www.oseco.com](http://www.oseco.com) or contact us by phone at 800-395-3475.

## OSHA Recognized Combustible Dusts

### Agricultural Products

Milk, Powdered  
Milk, nonfat, dry  
Soy flour  
Starch, corn  
Starch, rice  
Starch, wheat  
Sugar  
Sugar, milk  
Sugar, beet  
Tapioca  
Whey  
Wood flour

### Agricultural Dust

Alfalfa  
Apple  
Beet root  
Carrageen  
Carrot  
Cocoa bean dust  
Cocoa Powder  
Coconut shell dust  
Coffee dust  
Corn meal  
Cornstarch  
Cotton  
Cottonseed  
Garlic powder  
Gluten  
Grass dust  
Green coffee  
Hops (malted)  
Lemon peel dust

Lemon pulp  
Linseed  
Locust bean gum  
Malt  
Oat flour  
Oat grain dust  
Olive pellets  
Onion powder  
Parsley (dehydrated)  
Peach  
Peanut meal and skins  
Peat  
Potato  
Potato flour  
Potato starch  
Raw yucca seed dust  
Rice dust  
Rice flour  
Rice starch  
Rye flour  
Semolina  
Soybean dust  
Spice dust  
Spice powder  
Sugar (10x)  
Sunflower  
Sunflower seed dust  
Tea  
Tobacco blend  
Tomato  
Walnut dust  
Wheat flower  
Wheat grain dust  
Wheat starch  
Xanthan Gum

### Carbonaceous Dusts

Charcoal, activated  
Charcoal, wood  
Coal, bituminous  
Coke, petroleum  
Lampblack  
Lignite  
Peat, 22% $H_2O$   
Soot, pine  
Cellulose  
Peanut meal and skins  
Cork  
Corn

### Chemical Dusts

Adipic acid  
Anthraquinone  
Ascorbic acid  
Calcium acetate  
Calcium stearate  
Carboxy-methylcellulose  
Dextrin  
Lactose  
Lead stearate  
Methyl-cellulose  
Paraformaldehyde  
Sodium acorbate  
Sodium stearate  
Sulfur

### Metal Dusts

Aluminum  
Bronze  
Iron carbonyl  
Magnesium  
Zinc

### Plastic Dusts

(poly) Acrylamide  
(poly) Acrylonitrile  
(poly) Ethylene  
(low-pressure process)  
Epoxy Resin  
Melamine resin  
Melamine, molded  
(phenol-cellulose)  
Melamine, molded  
(wood flour and mineral filled phenolformaldehyde)  
(poly) Methyl acrylate, emulsion polymer  
Phenolic resin  
(poly) Propylene  
Terpene-phenol resin  
Urea-formaldehyde/cellulose, molded  
(poly) Vinyl alcohol  
(poly) Vinyl butyral  
(poly) Vinyl chloride/ethylene/vinyl acetylene suspension copolymer  
(poly) Vinyl chloride/vinyl acetylene emulsion copolymer

**oseco** pressure intelligence



## Explosion Vent Stocking Program

Oseco - Leading the Industry in Pressure Management Innovation

**3-Day Lead Time**  
Standard on all included vents

**oseco** pressure intelligence