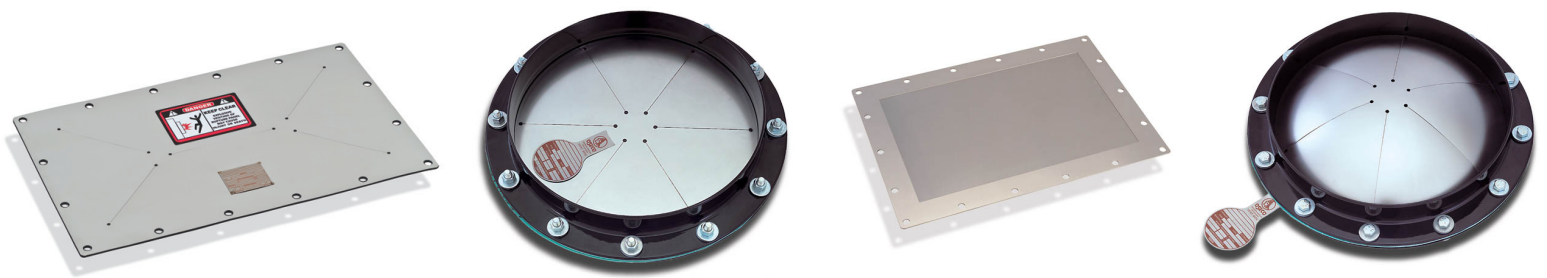


oseco pressure intelligence



Oseco Explosion Vent Guide

Explosion Vents

Oseco's round, square and rectangular explosion vents offer the highest relief capacity. Vents range from 8" square or round to 44" x 69" rectangular. Almost every size and rupture pressure are available, and standard materials include stainless steel 316, with seals of fluoropolymer or aluminum. Please contact Oseco for a quote regarding your specific size and pressure needs.



CRVC pictured.

CRV (Composite Rupture Vent)

Oseco's CRV offers a heavy duty design with an operating ratio of 50 percent of set burst pressure.

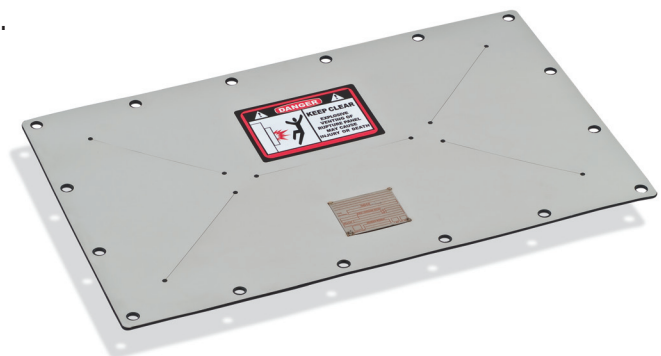
The CRVC is a CRV which can be used in applications where the positive pressure does not exceed 70% of the minimum tolerance. It is excellent for use in very high cycling applications. The CRVC is also available with insulation to decrease problems associated with condensation or heat loss (CRVCI).

GLV (Gasket Lined Vent)

The GLV is a unique, gasket lined explosion vent designed specifically to comply with NFPA 61 for use on vertical bucket elevators. Utilizing an integral gasket/sealing membrane, it provides an economical alternative to sometimes expensive explosion venting.

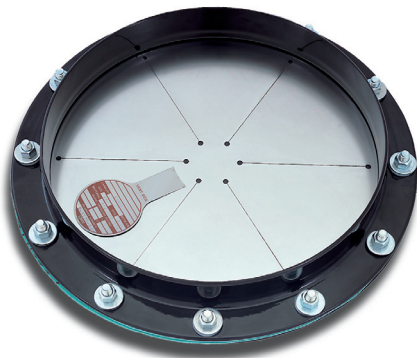
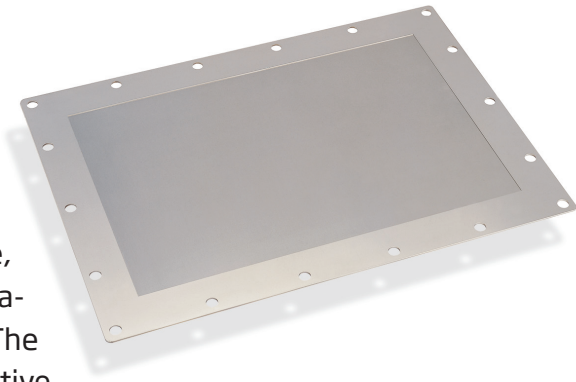
The GLV is available in sizes 12" x 18" and larger with an opening pressure of .5 to 1.0 PSIG per the NFPA standard.

- Economical
- Easy to install
- Gasket included
- Optimal Venting Area
- Dust Tight Seal



MV (Metal Vent)

Oseco's MV explosion vent is an all metal design (no fluoropolymer) using a stainless steel controlling membrane. No holes or slits are visible, which makes the MV vent excellent for applications where product buildup may be a concern. The MV may be used in applications where the positive pressure does not exceed 60% of the minimum tolerance. The MV is also available with FDA-approved gaskets for use in sanitary service applications (MV-S).



RND (Round Vent)

The RND is a round vent design with the same advanced technology and superior manufacturing capabilities utilized for our square and rectangular explosion vents. The RND can be fitted with optional vacuum support if required.

MVRB Explosion Vent (Metal Vent Reverse-Buckling)

The MVRB is designed and manufactured for high performance and the most demanding explosion vent applications. The MVRB is a reverse-buckling explosion vent with a smooth surface in contact with the process. It should be used to protect dust collectors, conveyor systems, dryers and most other equipment that requires precise over pressure protection. Ideal for hygienic and sanitary service.



CRP (Composite Rupture Panel)

Oseco's CRP has a classic four-petal, full-opening lightweight design to provide the fastest relief for dust deflagrations. Reliability guaranteed by Oseco's in-house laser.

Let Oseco help your company become OSHA/NFPA 68 compliant.

Oseco's line of explosion vents are NFPA 61 and 68 approved methods of deflagration and explosion venting. Our experienced sales team can provide a solution to get your company up to code. Visit us at www.oseco.com or contact us by phone at 800-395-3475.

OSHA Recognized Combustible Dusts

Agricultural Products

Milk, Powdered
Milk, nonfat, dry
Soy flour
Starch, corn
Starch, rice
Starch, wheat
Sugar
Sugar, milk
Sugar, beet
Tapioca
Whey
Wood flour

Agricultural Dust

Alfalfa
Apple
Beet root
Carrageen
Carrot
Cocoa bean dust
Cocoa Powder
Coconut shell dust
Coffee dust
Corn meal
Cornstarch
Cotton
Cottonseed
Garlic powder
Gluten
Grass dust
Green coffee
Hops (malted)
Lemon peel dust

Lemon pulp
Linseed
Locust bean gum
Malt
Oat flour
Oat grain dust
Olive pellets
Onion powder
Parsley (dehydrated)
Peach
Peanut meal and skins
Peat
Potato
Potato flour
Potato starch
Raw yucca seed dust
Rice dust
Rice flour
Rice starch
Rye flour
Semolina
Soybean dust
Spice dust
Spice powder
Sugar (10x)
Sunflower
Sunflower seed dust
Tea
Tobacco blend
Tomato
Walnut dust
Wheat flower
Wheat grain dust
Wheat starch
Xanthan Gum

Carbonaceous Dusts

Charcoal, activated
Charcoal, wood
Coal, bituminous
Coke, petroleum
Lampblack
Lignite
Peat, 22% H_2O
Soot, pine
Cellulose
Cellulose pulp
Cork
Corn

Chemical Dusts

Adipic acid
Anthraquinone
Ascorbic acid
Calcium acetate
Calcium stearate
Carboxy-methylcellulose
Dextrin
Lactose
Lead stearate
Methyl-cellulose
Paraformaldehyde
Sodium acorbate
Sodium stearate
Sulfur

Metal Dusts

Aluminum
Bronze
Iron carbonyl
Magnesium
Zinc

Plastic Dusts

(poly) Acrylamide
(poly) Acrylonitrile
(poly) Ethylene
(low-pressure process)
Epoxy Resin
Melamine resin
Melamine, molded
(phenol-cellulose)
Melamine, molded
(wood flour and mineral
filled phenolformaldehyde)
(poly) Methyl acrylate,
emulsion polymer
Phenolic resin
(poly) Propylene
Terpene-phenol resin
Urea-formaldehyde/
cellulose, molded
(poly) Vinyl alcohol
(poly) Vinyl butyral
(poly) Vinyl chloride/
ethylene/vinyl
acetylene suspension
copolymer
(poly) Vinyl chloride/
vinyl acetylene
emulsion
copolymer

